

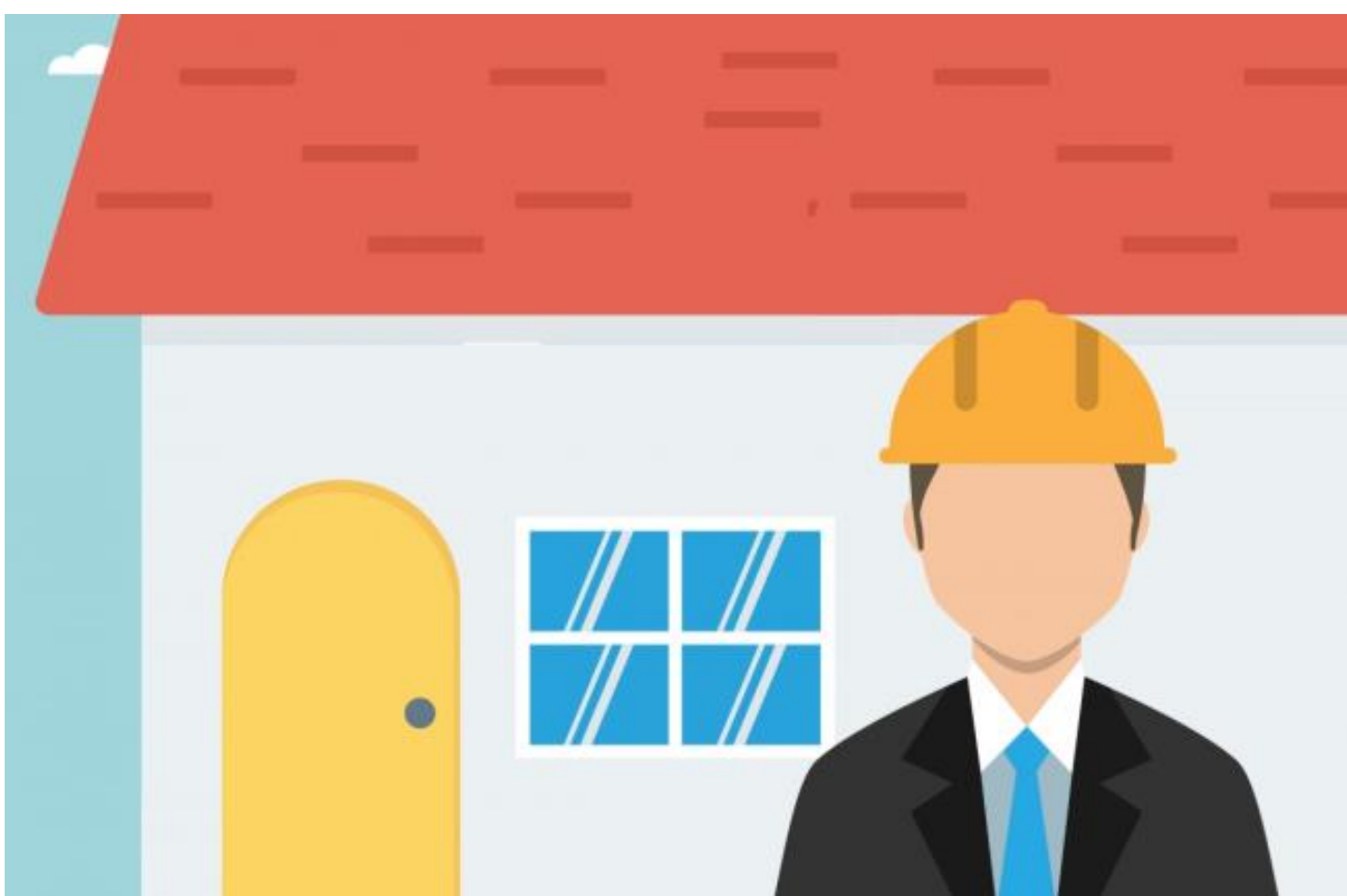


CHIC CHAT

APR EDITION

10

Welcome to the latest edition of **CHIC CHAT**. In light of the COVID-19 pandemic spreading across the UK, we thought we would dedicate this month's issue to the good practice we have seen from our members and partners.



COVID-19 Member Response

We have received feedback from many of our members on their operational changes and challenges over recent weeks. There are many common themes.

[READ MORE](#)



COVID-19 Update

Coronavirus covid-19 lockdown – what does it mean for chic's members and supply chain partners?

[READ MORE](#)



CHIC Conference 2020

The date our annual conference & exhibition has changed, which gives us more time to put on the best event yet!

[READ MORE](#)



Mental Stress

How are you going to remain mentally tough and resilient during these times of uncertainty? Our colleagues at ARK Consultancy have the answer...

[READ MORE](#)

If you would like to discuss any of the content in this month's newsletter, please feel free to get in touch at ccoulson@chicltd.co.uk.